



GS Monthly Verification Report

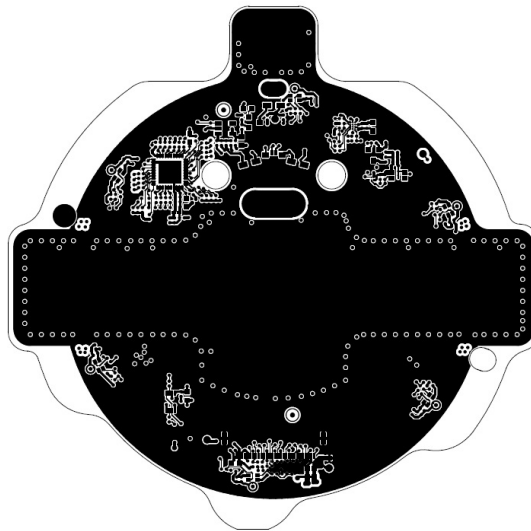
Product : Klippel

Overall Result :

FAILED

GS SN : BOWG17022000271

VM SN : BOWP17030802248

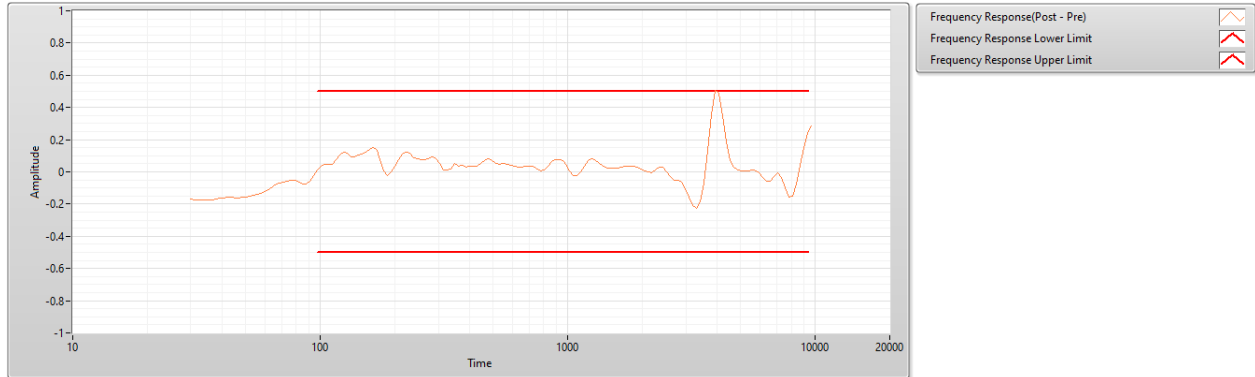


Date : 2020-03-25

GS Monthly Verification Report

FAILED

GS Verification Graphs



GS Verification Summary Data

Frequency	Frequency Response(Pre-Delta)	Frequency Response(Post-Delta)	Frequency Response(Post - Pre)
30.000	1.330	1.501	-0.171
31.060	1.316	1.489	-0.173
32.150	1.291	1.465	-0.174
33.280	1.268	1.442	-0.174
34.450	1.246	1.421	-0.175
35.660	1.224	1.399	-0.175
36.920	1.200	1.372	-0.172
38.220	1.172	1.339	-0.167
39.560	1.143	1.306	-0.163
40.950	1.112	1.273	-0.161
42.390	1.080	1.239	-0.159
43.890	1.045	1.204	-0.159
45.430	1.008	1.169	-0.161
47.030	0.970	1.131	-0.161
48.680	0.926	1.085	-0.159
50.400	0.876	1.031	-0.155
52.170	0.826	0.975	-0.149
54.000	0.778	0.922	-0.144
55.900	0.731	0.869	-0.138
57.870	0.681	0.812	-0.131
59.910	0.628	0.749	-0.121
62.010	0.576	0.684	-0.108
64.200	0.528	0.620	-0.092
66.460	0.481	0.558	-0.077
68.800	0.430	0.500	-0.070
71.210	0.379	0.444	-0.065
73.720	0.335	0.394	-0.059

GS Monthly Verification Report

Frequency	Frequency Response(Pre-Delta)	Frequency Response(Post-Delta)	Frequency Response(Post - Pre)
76.310	0.294	0.345	-0.051
79.000	0.242	0.294	-0.052
81.780	0.175	0.238	-0.063
84.650	0.105	0.182	-0.077
87.630	0.052	0.129	-0.077
90.720	0.025	0.080	-0.055
93.910	0.013	0.035	-0.022
97.210	0.006	-0.007	0.013
100.630	-0.010	-0.045	0.035
104.180	-0.037	-0.082	0.045
107.840	-0.073	-0.120	0.047
111.630	-0.110	-0.159	0.049
115.560	-0.127	-0.201	0.074
119.630	-0.107	-0.213	0.106
123.830	-0.055	-0.175	0.120
128.190	-0.009	-0.122	0.113
132.700	0.004	-0.091	0.095
137.370	-0.021	-0.115	0.094
142.200	-0.058	-0.160	0.102
147.200	-0.092	-0.203	0.111
152.390	-0.113	-0.235	0.122
157.750	-0.093	-0.230	0.137
163.290	0.007	-0.145	0.152
169.040	0.127	-0.006	0.133
174.990	0.157	0.083	0.074
181.150	0.062	0.056	0.006
187.510	-0.082	-0.059	-0.023
194.120	-0.169	-0.167	-0.002
200.950	-0.182	-0.215	0.033
208.020	-0.173	-0.248	0.075
215.330	-0.169	-0.280	0.111
222.910	-0.168	-0.289	0.121
230.760	-0.166	-0.282	0.116
238.880	-0.158	-0.243	0.085
247.270	-0.145	-0.224	0.079
255.970	-0.136	-0.209	0.073
264.980	-0.127	-0.200	0.073
274.310	-0.102	-0.181	0.079
283.950	-0.095	-0.186	0.091
293.940	-0.143	-0.225	0.082
304.290	-0.207	-0.257	0.050
315.000	-0.216	-0.229	0.013
326.070	-0.166	-0.176	0.010
337.550	-0.118	-0.136	0.018
349.430	-0.118	-0.168	0.050
361.730	-0.136	-0.169	0.033
374.440	-0.141	-0.182	0.041
387.620	-0.140	-0.167	0.027
401.260	-0.147	-0.182	0.035
415.380	-0.145	-0.181	0.036
429.980	-0.129	-0.164	0.035
445.110	-0.100	-0.153	0.053
460.780	-0.066	-0.137	0.071
477.000	-0.050	-0.130	0.080
493.760	-0.054	-0.122	0.068
511.140	-0.072	-0.124	0.052
529.130	-0.088	-0.137	0.049
547.760	-0.100	-0.150	0.050

GS Monthly Verification Report

Frequency	Frequency Response(Pre-Delta)	Frequency Response(Post-Delta)	Frequency Response(Post - Pre)
567.000	-0.121	-0.167	0.046
586.960	-0.141	-0.179	0.038
607.620	-0.151	-0.183	0.032
628.970	-0.142	-0.173	0.031
651.110	-0.122	-0.152	0.030
674.030	-0.102	-0.134	0.032
697.750	-0.095	-0.131	0.036
722.270	-0.110	-0.144	0.034
747.690	-0.144	-0.163	0.019
774.010	-0.179	-0.185	0.006
801.250	-0.194	-0.203	0.009
829.400	-0.173	-0.206	0.033
858.600	-0.112	-0.173	0.061
888.820	-0.018	-0.095	0.077
920.110	0.092	0.014	0.078
952.430	0.192	0.124	0.068
985.960	0.235	0.196	0.039
1020.660	0.174	0.168	0.006
1056.590	0.002	0.025	-0.023
1093.710	-0.169	-0.144	-0.025
1132.210	-0.247	-0.247	-0.000
1172.070	-0.223	-0.259	0.036
1213.320	-0.166	-0.237	0.071
1255.950	-0.148	-0.231	0.083
1300.160	-0.152	-0.224	0.072
1345.920	-0.155	-0.205	0.050
1393.300	-0.156	-0.188	0.032
1442.250	-0.153	-0.178	0.025
1493.020	-0.152	-0.176	0.024
1545.570	-0.154	-0.177	0.023
1599.970	-0.157	-0.180	0.023
1656.190	-0.159	-0.188	0.029
1714.490	-0.162	-0.196	0.034
1774.830	-0.165	-0.201	0.036
1837.310	-0.166	-0.200	0.034
1901.860	-0.170	-0.197	0.027
1968.800	-0.178	-0.197	0.019
2038.100	-0.192	-0.201	0.009
2109.840	-0.202	-0.200	-0.002
2183.970	-0.156	-0.152	-0.004
2260.850	-0.002	-0.013	0.011
2340.430	0.166	0.135	0.031
2422.810	0.281	0.251	0.030
2507.930	0.236	0.238	-0.002
2596.210	0.130	0.161	-0.031
2687.590	0.027	0.082	-0.055
2782.200	-0.068	-0.015	-0.053
2879.950	-0.217	-0.150	-0.067
2981.320	-0.475	-0.371	-0.104
3086.260	-0.735	-0.578	-0.157
3194.890	-0.819	-0.608	-0.211
3307.140	-0.657	-0.432	-0.225
3423.550	-0.214	-0.025	-0.189
3544.060	0.488	0.557	-0.069
3668.810	1.459	1.327	0.132
3797.710	2.429	2.073	0.356
3931.390	2.943	2.440	0.503
4069.770	2.661	2.172	0.489

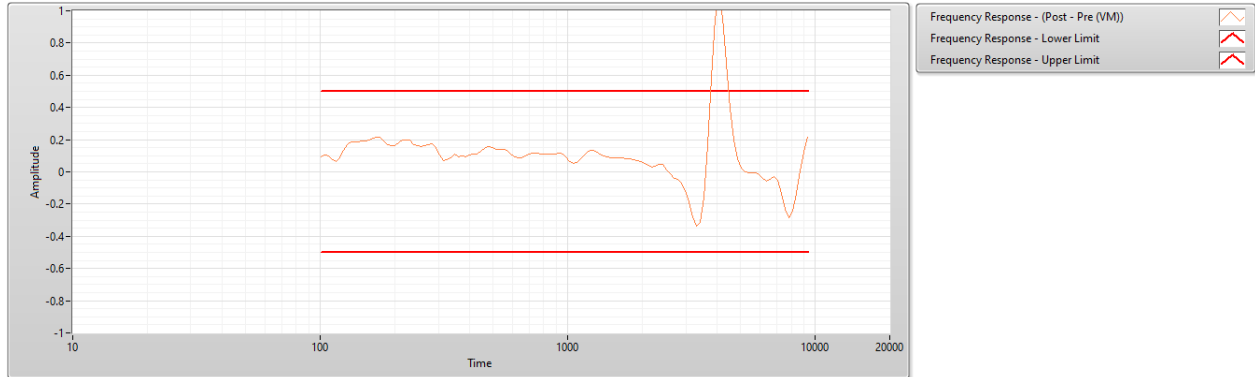
GS Monthly Verification Report

Frequency	Frequency Response(Pre-Delta)	Frequency Response(Post-Delta)	Frequency Response(Post - Pre)
4213.020	1.729	1.380	0.349
4361.040	0.687	0.502	0.185
4514.550	-0.007	-0.078	0.071
4673.460	-0.235	-0.262	0.027
4837.960	-0.136	-0.148	0.012
5007.940	0.080	0.072	0.008
5184.220	0.313	0.307	0.006
5366.700	0.466	0.459	0.007
5555.600	0.526	0.517	0.009
5750.790	0.536	0.528	0.008
5953.220	0.517	0.527	-0.010
6162.770	0.491	0.525	-0.034
6379.690	0.431	0.490	-0.059
6603.840	0.490	0.547	-0.057
6836.290	0.795	0.824	-0.029
7076.920	1.138	1.145	-0.007
7326.020	1.143	1.179	-0.036
7583.420	0.630	0.731	-0.101
7850.350	-0.190	-0.031	-0.159
8126.680	-0.904	-0.750	-0.154
8412.730	-1.337	-1.263	-0.074
8708.310	-1.551	-1.592	0.041
9014.830	-1.526	-1.676	0.150
9332.150	-1.382	-1.619	0.237
9660.630	-0.961	-1.245	0.284

GS Monthly Verification Report

FAILED

Verification Master Graphs



Verification Master Summary Data

Frequency	Frequency Response - Pre-VM	Frequency Response - Post-VM	Frequency Response - (Post - Pre (VM))
100.630	106.419	106.510	0.091
104.180	106.470	106.577	0.107
107.840	106.349	106.449	0.100
111.630	105.899	105.976	0.077
115.560	105.050	105.117	0.067
119.630	103.908	103.998	0.090
123.830	102.801	102.933	0.132
128.190	101.971	102.141	0.170
132.700	101.486	101.672	0.186
137.370	101.192	101.381	0.189
142.200	100.917	101.106	0.189
147.200	100.612	100.801	0.189
152.390	100.282	100.474	0.192
157.750	99.955	100.151	0.196
163.290	99.615	99.822	0.207
169.040	99.332	99.548	0.216
174.990	99.276	99.489	0.213
181.150	99.408	99.599	0.191
187.510	99.516	99.685	0.169
194.120	99.411	99.571	0.160
200.950	99.097	99.260	0.163
208.020	98.777	98.955	0.178
215.330	98.534	98.730	0.196
222.910	98.328	98.528	0.200

GS Monthly Verification Report

Frequency	Frequency Response - Pre-VM	Frequency Response - Post-VM	Frequency Response - (Post - Pre (VM))
230.760	98.091	98.288	0.197
238.880	97.764	97.933	0.169
247.270	97.359	97.521	0.162
255.970	96.997	97.154	0.157
264.980	96.750	96.911	0.161
274.310	96.660	96.830	0.170
283.950	96.682	96.855	0.173
293.940	96.665	96.814	0.149
304.290	96.499	96.604	0.105
315.000	96.131	96.202	0.071
326.070	95.729	95.807	0.078
337.550	95.412	95.502	0.090
349.430	95.197	95.310	0.113
361.730	94.990	95.083	0.093
374.440	94.764	94.866	0.102
387.620	94.527	94.617	0.090
401.260	94.312	94.415	0.103
415.380	94.120	94.229	0.109
429.980	93.946	94.056	0.110
445.110	93.803	93.930	0.127
460.780	93.703	93.846	0.143
477.000	93.715	93.870	0.155
493.760	93.845	93.995	0.150
511.140	94.074	94.215	0.141
529.130	94.346	94.486	0.140
547.760	94.630	94.771	0.141
567.000	94.953	95.084	0.131
586.960	95.309	95.422	0.113
607.620	95.703	95.799	0.096
628.970	96.142	96.231	0.089
651.110	96.647	96.737	0.090
674.030	97.197	97.295	0.098
697.750	97.773	97.882	0.109
722.270	98.350	98.464	0.114
747.690	98.971	99.085	0.114
774.010	99.629	99.740	0.111
801.250	100.300	100.409	0.109
829.400	100.913	101.024	0.111
858.600	101.417	101.530	0.113
888.820	101.796	101.909	0.113
920.110	102.042	102.156	0.114
952.430	102.172	102.281	0.109
985.960	102.218	102.306	0.088
1020.660	102.272	102.336	0.064
1056.590	102.443	102.494	0.051
1093.710	102.721	102.781	0.060
1132.210	102.955	103.039	0.084
1172.070	103.034	103.142	0.108
1213.320	102.959	103.085	0.126
1255.950	102.852	102.984	0.132
1300.160	102.755	102.881	0.126
1345.920	102.619	102.732	0.113
1393.300	102.353	102.453	0.100
1442.250	101.922	102.015	0.093
1493.020	101.382	101.471	0.089

GS Monthly Verification Report

Frequency	Frequency Response - Pre-VM	Frequency Response - Post-VM	Frequency Response - (Post - Pre (VM))
1545.570	100.882	100.967	0.085
1599.970	100.560	100.645	0.085
1656.190	100.447	100.532	0.085
1714.490	100.451	100.534	0.083
1774.830	100.446	100.525	0.079
1837.310	100.384	100.458	0.074
1901.860	100.332	100.401	0.069
1968.800	100.378	100.441	0.063
2038.100	100.504	100.558	0.054
2109.840	100.551	100.593	0.042
2183.970	100.354	100.386	0.032
2260.850	99.960	99.995	0.035
2340.430	99.656	99.704	0.048
2422.810	99.665	99.710	0.045
2507.930	99.991	100.005	0.014
2596.210	100.293	100.279	-0.014
2687.590	100.277	100.234	-0.043
2782.200	99.798	99.750	-0.048
2879.950	98.864	98.795	-0.069
2981.320	97.527	97.413	-0.114
3086.260	96.072	95.884	-0.188
3194.890	95.103	94.826	-0.277
3307.140	95.019	94.685	-0.334
3423.550	95.510	95.195	-0.315
3544.060	95.673	95.519	-0.154
3668.810	94.779	94.945	0.166
3797.710	92.973	93.562	0.589
3931.390	90.903	91.854	0.951
4069.770	89.239	90.326	1.087
4213.020	88.351	89.308	0.957
4361.040	88.275	88.951	0.676
4514.550	88.862	89.255	0.393
4673.460	89.790	89.987	0.197
4837.960	90.802	90.884	0.082
5007.940	91.677	91.701	0.024
5184.220	92.418	92.417	-0.001
5366.700	93.028	93.024	-0.004
5555.600	93.475	93.472	-0.003
5750.790	93.741	93.735	-0.006
5953.220	93.995	93.973	-0.022
6162.770	94.214	94.173	-0.041
6379.690	94.251	94.195	-0.056
6603.840	94.087	94.041	-0.046
6836.290	94.384	94.355	-0.029
7076.920	95.724	95.671	-0.053
7326.020	98.093	97.959	-0.134
7583.420	100.519	100.285	-0.234
7850.350	102.060	101.774	-0.286
8126.680	102.201	101.959	-0.242
8412.730	101.157	101.023	-0.134
8708.310	99.321	99.324	0.003
9014.830	97.264	97.383	0.119
9332.150	95.195	95.410	0.215

GS Monthly Verification Report

Frequency	Frequency Response - Pre-VM	Frequency Response - Post-VM	Frequency Response - (Post - Pre (VM))
-----------	-----------------------------	------------------------------	---